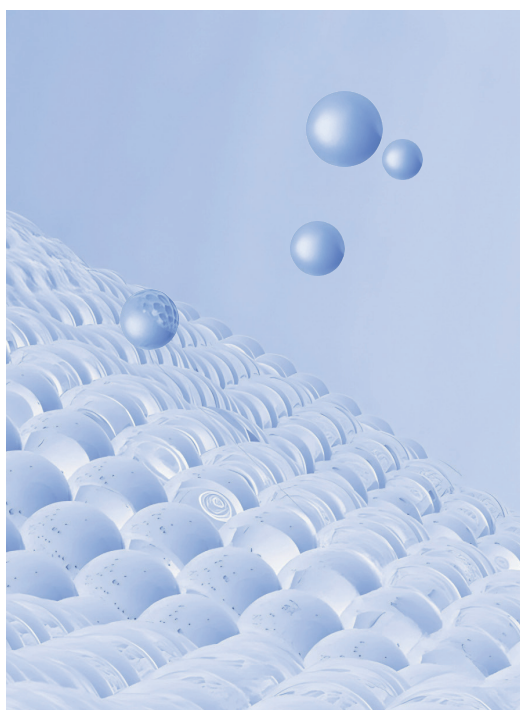


LAUNDRY SYSTEMS



# WASHER SERIES DRYER SERIES

WASHER SERIES 30/40/60/100/120kg

DRYER SERIES 40/60/100/120kg



# CATALOGS



- 03** WASHER (30/40/60/100/120kg)
- 09** FORWARD-TILTING WASHER (100/120 KG)
- 15** DRYERS (40/60/100/120kg)
- 19** FORWARD-TILTING DRYER (100 KG)

L A U N D R Y   S Y S T E M S



# COMPANY PROFILE

Kingstar series industrial washing extractors are developed and designed by CLM, a leading brand in the laundry industry. With over 20 years of experience in washing equipment technology, we are committed to advancing global industrial laundry standards and dedicated to building the best washer extractors in the world.

CLM is a manufacturing enterprise specializing in the R&D, production, and sales of industrial washing machines, commercial washing machine, tunnel washer systems, high-speed ironing lines, and intelligent hanging bag logistics systems . We also provide comprehensive planning and design solutions for smart laundry factories.

With over 20 years of development, CLM has become a key player in the field of industrial washing equipment manufacturing. Our products are exported to more than 70 countries and regions, including Europe, North America, Africa, and Southeast Asia.

**20<sup>+</sup>**  
years  
Laundry equipment  
industry experience

**80<sup>+</sup>**  
Industry-related  
patents

**90<sup>+</sup>**  
Sales regions

# 1 | WASHER

30kg 40kg 60kg 100kg 120kg





## TECHNICAL FEATURES

# n1

### LEADING TECHNOLOGY

Pioneering the Era  
of Intelligent Washing



#### 12.1-inch HD Touchscreen Design

Kingstar fully automatic washer features a 12.1-inch HD touchscreen design, capable of automatic water addition, prewash, main wash, rinsing, and neutralizing processes. It includes 30 preset wash programs and 5 frequently used one-touch automatic cycles.



#### Smart Three-Color Status Indicator

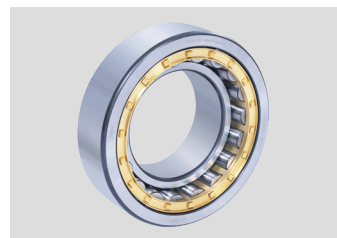
The Kingstar fully automatic washer is equipped with a smart three-color status indicator, enabling clear visibility of the machine's operation from a distance. The indicator displays key statuses such as active cycle, cycle complete, and fault alerts.





## RATIONAL STRUCTURE ADVANCED TECHNOLOGY

Distinctive Features



# 98%

Shock absorption  
rate



### Triple-Layer Shock Absorption System

Kingstar's fully automatic washer adopts a unique lower suspension shock absorption system, featuring a triple-structure design: inner and outer dual-layer base springs, rubber feet, and dampers. This advanced system achieves ultra-low vibration with a shock absorption rate of up to 98%, eliminating the need for a fixed foundation and allowing installation on any type of floor.

# 270°

Rolled Edge  
Opening Design



### 270-Degree Rolled Edge Drum Opening

The Kingstar fully automatic washer features a 270-degree rolled edge at the junction between the inner and outer tubs. This precision-engineered design creates a smooth, high-strength interface with a minimal gap, significantly reducing the risk of fabric snagging or tearing during loading and unloading.

## WASHER SERIES



### SUPERIOR DEHYDRATION RATE

Energy Saving and  
Consumption Reduction



## 400G

Ultra-High Spin  
Extraction Power

The Kingstar fully automatic washer is engineered with a reinforced structure, an efficient transmission system, and a high-quality inverter, all designed to support its powerful 400G extraction force. This high-speed extraction significantly reduces the moisture content in towels and linens, resulting in shorter drying times, higher daily throughput, and reduced steam consumption—substantially lowering operational costs.



## SAFETY DESIGN

Ensuring  
Worry-Free Washing

The outer drum body  
tilts backward by 3.5  
degree

Extra-large stainless  
steel loading door



### Extra-Large Stainless Steel Loading Door

The Kingstar fully automatic washer features a spacious, stainless steel front-loading door for fast and effortless garment handling. Its electronic lock system, controlled by advanced automation, opens only after the spin cycle completes, ensuring safety and peace of mind.



### 304 Stainless Steel Components

All water-contacting parts—including the inner drum and outer cylinder—are made from durable 304 stainless steel. This construction offers superior rust resistance and consistent washing quality over years of use.



### 3.5° Tilted Drum Design

The drum is tilted backward by 3.5°, enabling multidirectional garment movement for improved cleaning efficiency. This innovative design also helps prevent fabric damage near the door area.



## BRANDED ACCESSORIES

More stable quality  
Reduced after-sales costs



### Imported Electrical components

Kingstar fully automatic washer uses imported electrical components, including Mitsubishi inverters from Japan, Schneider contactors from France, and all wires, plugs, and bearings are imported brands.





## PRECISION-PROCESSED TRANSMISSION STRUCTURE

160<sub>mm</sub>

Largest main  
shaft diameter

5 years

No need to replace  
bearing seals

Durable and Long-Lasting



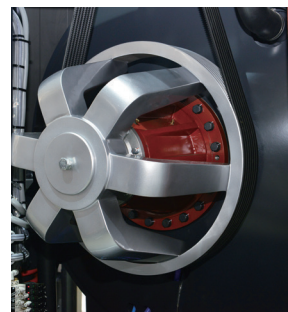
### Reliable transmission system

The transmission system of Kingstar fully automatic washer is meticulously designed, with the thickest diameter of the main shaft reaching 160mm. Imported roller bearings and oil seals ensure no need for replacement for 5 years.



### One-Piece Die-Cast Belt Pulley

The belt pulley of Kingstar fully automatic washer is made of high-grade aluminum alloy, integrally die-cast, ensuring the assembly accuracy of the main shaft, with excellent rust resistance, corrosion resistance, and shock absorption, making it durable and long-lasting.



## TECHNICAL PARAMETERS



Specification Model	SHS-2030	SHS-2040	SHS-2060	SHS-2100	SHS-2120
Operating Voltage (V/P/Hz)	380/3/50	380/3/50	380/3/50	380/3/50	380/3/50
Maximum Washing Capacity (kg)	30	40	60	100	120
Drum Volume (L)	300	400	600	1000	1200
Maximum Spinning Speed (rpm)	870	833	760	745	745
Transmission Power (kW)	4	5.5	7.5	11	11
Steam Pressure (MPa)	0.4~0.6	0.4~0.6	0.4~0.6	0.4~0.6	0.4~0.6
Inlet Water Pressure (MPa)	0.2~0.4	0.2~0.4	0.2~0.4	0.2~0.4	0.2~0.4
Noise (db)	≤70	≤70	≤70	≤70	≤70
Dehydration Factor (G)	350	350	350	400	400
Steam Pipe Diameter (mm)	DN25	DN25	DN25	DN25	DN25
Inlet Pipe Diameter (mm)	DN40	DN40	DN40	DN50	DN50
Hot Water Pipe Diameter (mm)	DN40	DN40	DN40	DN50	DN50
Drain Pipe Diameter (mm)	DN65	DN100	DN100	DN100	DN100
Inner Drum Diameter (mm)	Φ820	Φ900	Φ1080	Φ1310	Φ1310
Inner Drum Depth (mm)	570	660	680	750	970
Total Weight (kg)	1350	2200	2600	3260	3360
Overall Dimensions (mm)	1245×1480×1770	1360×1690×1850	1540×1710×2025	1815×2090×2390	1815×2310×2390

## 2 | FORWARD- TILTING WASHER

100kg 120kg



## TECHNICAL FEATURES

# n1

### FRONT TILT

15-Degree Forward-Tilting  
Design for Easier Discharge



#### Reducing Worker Labor Intensity

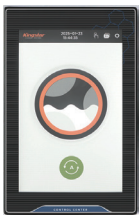
The Kingstar fully automatic washer incorporates a 15-degree forward-tilting design, which facilitates easier unloading of laundry and reduces manual handling for operators.



# n2

### LEADING TECHNOLOGY

Pioneering  
the Era of  
Intelligent Washing



#### 12.1-Inch HD Touchscreen Control Panel

The Kingstar fully automatic washer is equipped with a 12.1-inch HD touchscreen for intuitive operation. The system supports automatic water filling, pre-wash, main wash, rinsing, and neutralization processes. It offers 30 preset washing programs and 5 frequently used programs for daily operations.



#### Smart Load Sensing System

The washer is equipped with an intelligent weighing system that automatically detects the weight of each load. Based on the measured load, the system precisely adjusts water, steam, and detergent levels, ensuring consistent washing quality while significantly reducing water, electricity, steam, and chemical consumption.



#### Intelligent Three-Color Status Indicator

The Kingstar washer incorporates an intelligent three-color LED status indicator, allowing operators to easily monitor machine status from a distance. The light colors indicate key conditions: Green for normal operation, Blue for cycle complete, and Red for fault or alarm status.

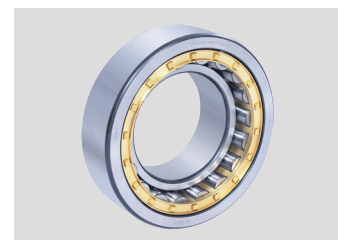




# 03

## RATIONAL STRUCTURE

Advanced Technology  
Distinctive Features



# 98%

Shock Absorption  
Efficiency



### Triple Shock Absorption Structure

Kingstar's fully automatic washer adopts a unique lower suspension shock absorption system, featuring a triple-structure design: inner and outer dual-layer base springs, rubber feet, and dampers. This advanced system achieves ultra-low vibration with a shock absorption rate of up to 98%, eliminating the need for a fixed foundation and allowing installation on any type of floor.

# 270°

Rolled Edge  
Opening Design



### 270° Rolled-Edge Opening Design

The Kingstar fully automatic washer features a 270-degree rolled-edge opening at the junction between the inner drum and outer cylinder. This design provides a smooth surface, enhanced structural strength, and minimal gap, which together reduce wear and prevent damage to garments during loading and unloading.

## Forward-Tilting Washer



### Superior Extraction Performance

Energy-Saving and  
High-Efficiency Operation



## 400G

Ultra-High Spin  
Extraction Power

1. The Kingstar fully automatic washer is engineered with a reinforced structure, an efficient transmission system, and a high-quality inverter, all designed to support its powerful 400G extraction force. This high-speed extraction significantly reduces the moisture content in towels and linens, resulting in shorter drying times, higher daily throughput, and reduced steam consumption—substantially lowering operational costs.



# 05

## SAFETY DESIGN

Ensuring  
Worry-Free Washing



### Extra-Large Stainless Steel Loading Door

The Kingstar fully automatic washer features a spacious, stainless steel front-loading door for fast and effortless garment handling. Its electronic lock system, controlled by advanced automation, opens only after the spin cycle completes, ensuring safety and peace of mind.



### 304 Stainless Steel Components

All water-contacting parts—including the inner drum and outer cylinder—are made from durable 304 stainless steel. This construction offers superior rust resistance and consistent washing quality over years of use.



### 3.5° Tilted Drum Design

The drum is tilted backward by 3.5°, enabling multidirectional garment movement for improved cleaning efficiency. This innovative design also helps prevent fabric damage near the door area.

# 06

## BRANDED ACCESSORIES

More stable quality  
Reduced after-sales costs



### Premium Imported Electrical Components

The Kingstar fully automatic washer is equipped with high-quality electrical components sourced from internationally renowned brands.

It features Mitsubishi inverters from Japan, Schneider contactors from France, and electrical wiring, plugs, and bearings from leading global manufacturers.

These premium components ensure reliable performance, extended service life, and stable operation in demanding industrial environments.



## PRECISION-PROCESSED TRANSMISSION STRUCTURE

Durable and Long-Lasting

160<sub>mm</sub>

Largest main shaft diameter

5<sub>years</sub>

No need to replace bearing seals



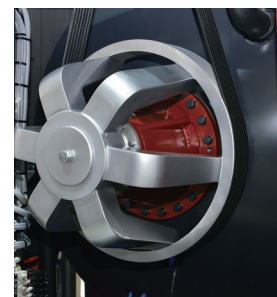
### Precision-Engineered Transmission System

Kingstar's fully automatic washer features a robust, precision-engineered transmission system. The main shaft, with a maximum diameter of 160 mm, is supported by imported roller bearings and oil seals that offer stable, maintenance-free operation for up to 5 years.



### Die-Cast Aluminum Pulley for Superior Stability

The belt pulley is integrally die-cast from high-grade aluminum alloy to ensure precise shaft alignment. Its one-piece design provides excellent corrosion resistance, shock absorption, and long-term durability, contributing to smooth, vibration-free operation.



## TECHNICAL PARAMETERS



Specification Model	SHS-2100T	SHS-2120T
Operating Voltage (V/P/Hz)	380/3/50	380/3/50
Washing Capacity (kg)	100	120
Drum Volume (L)	1000	1200
Spinning Speed (rpm)	745	745
Transmission Power (kW)	11	11
Steam Pressure (MPa)	0.4-0.6	0.4-0.6
Inlet Water Pressure (MPa)	0.2-0.4	0.2-0.4
Noise (db)	≤70	≤70
Dehydration Factor (G)	400	400
Steam Pipe Diameter (mm)	DN25	DN25
Inlet Pipe Diameter (mm)	DN50	DN50
Hot Water Pipe Diameter (mm)	DN50	DN50
Drain Pipe Diameter (mm)	DN100	DN100
Inner Drum Diameter (mm)	Φ1310	Φ1310
Inner Drum Depth (mm)	750	950
Front Tilt Angle (°)	15	15
Total Weight (kg)	3690	3830
Overall Dimensions (mm)	1860×1870×2470	1860×2090×2470

# 3 | DRYERS

40kg 60kg 100kg 120kg



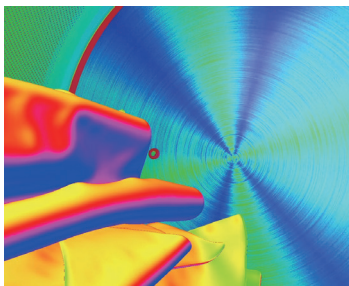


**10** inches  
HD touchscreen

**99**  
Built-in automatic  
programs

## TECHNICAL FEATURES

L A U N D R Y   S Y S T E M S



Humidity Control Technology



### Advanced Intelligent Drying System

Equipped with a 10-inch full-color touchscreen, the system offers 99 built-in, customizable drying programs tailored to various fabric types and load sizes—delivering flexible, user-friendly operation.



### Sensor-Based Humidity Control Technology

Utilizing real-time moisture monitoring, the system automatically adjusts drying duration to prevent over-drying, protect fabric integrity, and improve energy efficiency.





**40<sub>min</sub>**

Minutes automatic drying

**100<sub>kg</sub>**

Maximum load capacity for drying at one time



### High Efficiency

The 100 kg dryer can directly load 100 kg of towels, with a steam pressure of over 5 kg, drying within 40 minutes, ensuring high efficiency and speed.



### Loading Capacity Design

Designed with a 1:20 loading capacity ratio, the inner drum is made of 304 stainless steel material.



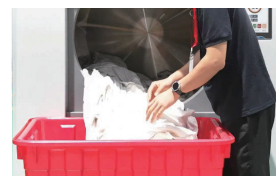
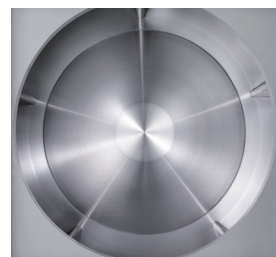
### Convenient Door Design

Features an upper and lower door opening design with a door diameter of 1 meter, making loading and unloading towels effortless and time-saving.



### High-Power Heating Design

Features a high-power heating system with an added insulation layer on the outer cylinder, ensuring quick temperature rise, good insulation effect, and improved drying efficiency.





### Imported Electrical Components

All electrical components are imported brands, including Mitsubishi inverters, Schneider contactors, and all wires, plugs, and bearings are also imported brands.



### Multiple Heating Methods

Offers three heating methods: steam heating, electric heating, and gas heating.

## TECHNICAL PARAMETERS



Specification Model	SDR-2040	SDR-2060	SDR-2100
Drum Diameter (mm)	1140	1260	1460
Drum Depth (mm)	875	980	1200
Volume (L)	800	1220	2000
Volume Load Ratio	20	20	20
Main Motor Power (kW)	1.1	1.5	2.2
Fan Motor Power (kW)	2.2	3	5.5
Rated Voltage (v)	380	380	380
Heater Power (kW)	36	48	81.6
Steam Pressure (MPa)	0.6	0.6	0.6
Width (mm)	1360	1480	1680
Depth (mm)	1580	1765	2025
Height (mm)	1955	2115	2355
Weight (kg)	1000	1150	1400

# 4 | FORWARD- TILTING DRYER

100kg





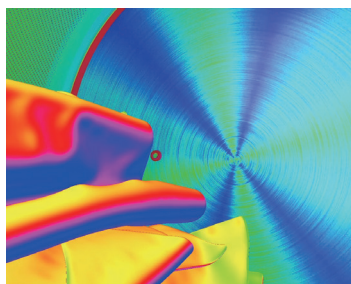


**10** inches  
HD touchscreen

**99**  
Built-in automatic  
programs

## TECHNICAL FEATURES

## LAUNDRY SYSTEMS



Humidity Control Technology



### Advanced Intelligent Drying System

Equipped with a 10-inch full-color HD touchscreen, it includes 99 built-in editable automatic programs, allowing selection based on different clothes and linens.



### Humidity Control Technology

Intelligent control of drying time, accurately controlling the moisture level of the linens to prevent over-drying and potential damage to the clothes while reducing energy consumption.



**40<sub>min</sub>**

Minutes automatic drying

**100<sub>kg</sub>**

Maximum load capacity for drying at one time



### High Efficiency

The 100 kg dryer can directly load 100 kg of towels, with a steam pressure of over 5 kg, drying within 40 minutes, ensuring high efficiency and speed.



### Loading Capacity Design

Designed with a 1:20 loading capacity ratio, the inner drum is made of 304 stainless steel material.



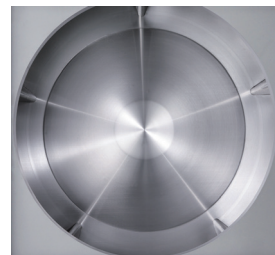
### Convenient Door Design

Features an upper and lower door opening design with a door diameter of 1 meter, making loading and unloading towels effortless and time-saving.



### High-Power Heating Design

Features a high-power heating system with an added insulation layer on the outer cylinder, ensuring quick temperature rise, good insulation effect, and improved drying efficiency.





### Imported Electrical Components

All electrical components are imported brands, including Mitsubishi inverters, Schneider contactors, and all wires, plugs, and bearings are also imported brands.



### Multiple Heating Methods

Offers three heating methods: steam heating, electric heating, and gas heating.



### Front Tilt Discharge Design

Quick and effortless discharge, reducing discharge time, lowering labor intensity, and improving the daily working efficiency of the dryer.

## TECHNICAL PARAMETERS

Specification Model	SDR-2100T
Drum Diameter (mm)	1460
Drum Depth (mm)	1200
Volume (L)	2000
Volume Load Ratio	20
Main Motor Power (kW)	2.2
Fan Motor Power (kW)	5.5
Rated Voltage (v)	380
Heater Power (kW)	81.6
Steam Pressure (MPa)	0.6
Width (mm)	1750
Depth (mm)	2120
Height (mm)	2500
Weight (kg)	1800





**Jiangsu Chuandao Intelligent  
Equipment Co., Ltd.**

📍 No.388 Xinggang Road, Chongchuan District,  
Nantong City, 226000, Jiangsu Province, China.

☎ +86-(0)513-85663388

📠 +86-(0)513-85663366

**Kunshan Chuandao Washing  
Machinery Co.,Ltd.**

📍 No.18 Xiangyun Road, Dianshanhu Town,  
Kunshan City, China

☎ +86-(0)512-83663888

📠 +86-(0)512-83663000

**Shanghai Chuandao Aimei  
Machinery Equipment Co.,Ltd.**

📍 No.516 Tengfu Road, Baihe Town, Qingpu District,  
Shanghai City, China

☎ +86-(0)21-39821778

📠 +86-(0)21-39821005

🌐 [www.kingstarwasher.com](http://www.kingstarwasher.com)  
📺 [www.youtube.com/@kingstarwasher](http://www.youtube.com/@kingstarwasher)  
📘 [www.facebook.com/kingstarwasher](https://www.facebook.com/kingstarwasher)  
🌐 [www.linkedin.com/company/kingstarwasher](https://www.linkedin.com/company/kingstarwasher)