



LAUNDRY SYSTEMS

WASHER SERIES DRYER SERIES

WASHING MACHINE 12/15/20/25kg

DRYER SERIES 15/20/25kg



CATLOGS



03 STANDARD WASHER
(12/15/20/25 KG)

07 PROFESSIONAL WASHER
(12/15/20/25 KG)

13 KINGSTAR DRYER SERIES
(15/20/25KG)



COMPANY PROFILE

20⁺
years

Laundry equipment
industry experience

80⁺

Industry-related
patents

90⁺

Sales regions

Kingstar series industrial washing extractors are developed and designed by CLM, a leading brand in the laundry industry. With over 20 years of experience in washing equipment technology, we are committed to advancing global industrial laundry standards and dedicated to building the best washer extractors in the world.

CLM is a manufacturing enterprise specializing in the R&D, production, and sales of industrial washing machines, commercial washing machine, tunnel washer systems, high-speed ironing lines, and intelligent hanging bag logistics systems. We also provide comprehensive planning and design solutions for smart laundry factories.

With over 20 years of development, CLM has become a key player in the field of industrial washing equipment manufacturing. Our products are exported to more than 70 countries and regions, including Europe, North America, Africa, and Southeast Asia.



WASHER

01

STANDARD WASHER

12kg

15kg

20kg

25kg



TECHNICAL FEATURES



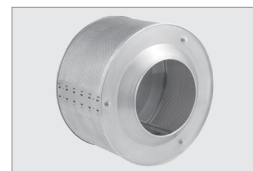
Advanced Suspension and Shock Absorber System

Engineered with ultra-low vibration technology and equipped with German-branded dampers, the suspension system ensures stable and quiet operation on any type of flooring—without the need for a dedicated foundation.



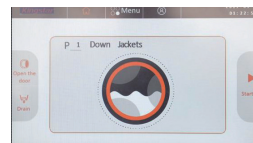
304 Stainless Steel Construction

The inner drum, outer cylinder, and all water-contact surfaces are constructed from high-grade 304 stainless steel, providing superior corrosion resistance, maintaining optimal washing quality, and minimizing the risk of mechanical failure or contamination.



10-Inch Full-Color HD LCD Touchscreen

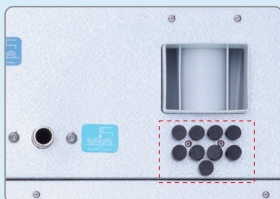
The intuitive 10-inch full-color HD touchscreen supports both custom programming and one-touch operation, offering a simple, efficient, and user-friendly interface for operators at all skill levels.



TECHNICAL FEATURES



Electronic Door Lock Design



Optional Automatic Dosing System



Electronic Door Lock System

The door is electronically controlled by software and remains locked until the high-speed extraction cycle is fully complete, effectively preventing accidental opening and ensuring operator safety.



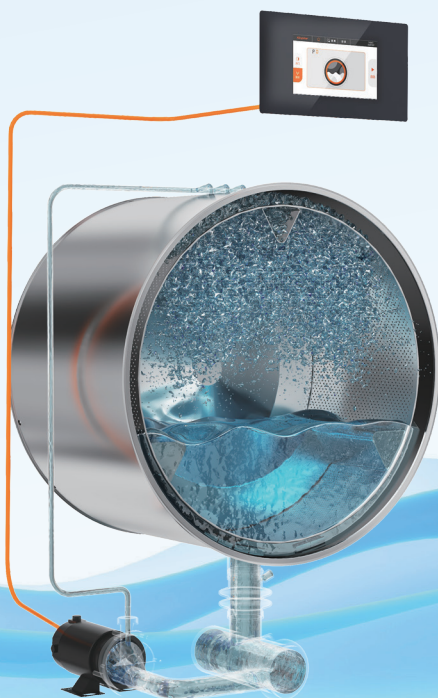
Intelligent Load Weighing System

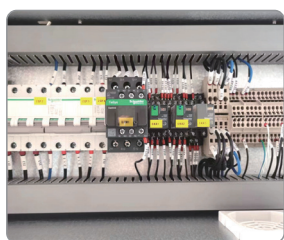
Automatically detects the weight of each load and adjusts the water volume accordingly, significantly reducing heating and detergent consumption while maintaining consistent washing performance.



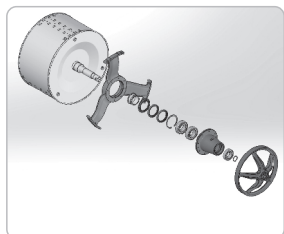
Optional Automatic Dosing System

Features an open-signal interface compatible with dispensers from any brand, enabling precise chemical dosing. This reduces chemical waste, minimizes manual intervention, and ensures more consistent and reliable washing results.





Imported Electrical Components



Main Transmission Uses Three-Bearing Design



High-Speed Extraction System

Equipped with a 300G extraction rate, the unit features a custom-built main motor from a publicly listed manufacturer, delivering superior extraction performance, significantly reducing drying time, and enhancing overall energy efficiency.



Premium Imported Electrical Components

All electrical components are sourced from reputable international brands, including bearings supplied by TWB (USA), contactors from Schneider (France), and wiring and plugs from globally recognized manufacturers.



Three-Bearing Main Transmission

The main transmission adopts a high-strength, three-bearing design that ensures exceptional durability and enables up to 10 years of maintenance-free operation under normal working conditions.



Long-Life Structural Design

The entire unit is engineered for a service life of up to 20 years and comes with a comprehensive 2-year warranty covering the whole machine.

TECHNICAL PARAMETERS



Specification Model	SHS-2012	SHS-2015	SHS-2020	SHS-2025
Operating Voltage (V/P/Hz)	380/3/50	380/3/50	380/3/50	380/3/50
Washing Capacity (kg)	5~12	5~15	8~20	8~25
Drum Volume (L)	120	150	200	250
Washing/Spinning Speed (rpm)	30~850	30~850	30~850	30~850
Transmission Power (kW)	1.5	1.5	2.2	3
Electric Heating Power (kW)	12	12	18	18
Noise (db)	≤70	≤70	≤70	≤70
Extraction Factor (G)	300	300	300	300
Automatic Dosing Ports (ways)	9	9	9	9
Steam Pressure (MPa)	0.2~0.4	0.2~0.4	0.2~0.4	0.2~0.4
Inlet Water Pressure (MPa)	0.2~0.4	0.2~0.4	0.2~0.4	0.2~0.4
Inlet Pipe Diameter (mm)	DN20	DN20	DN20	DN20
Hot Water Pipe Diameter (mm)	DN20	DN20	DN20	DN20
Drain Pipe Diameter (mm)	Φ76	Φ76	Φ76	Φ76
Inner Drum Diameter × Depth (mm)	Φ650×372	Φ650×465	Φ750×410	Φ750×566
Overall Dimensions (mm)	890×885×1480	890×1070×1480	980×1050×1570	980×1160×1570
Total Weight (kg)	400	420	480	500

12

PROFESSIONAL WASHER (WET CLEANING WASHER)

12kg

15kg

20kg

25kg



WASHER

TECHNICAL FEATURES



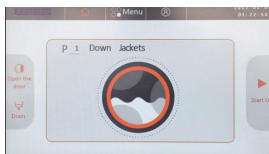
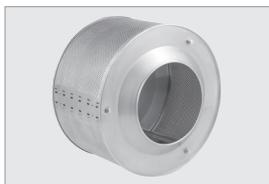
INTELLIGENT WASHING AND CARE

15 rpm
Minimum
rotation speed

70⁺
sets
Customizable
wash programs

12.1 inches
Full-Color LCD
Touchscreen

Ensure Safer Washing

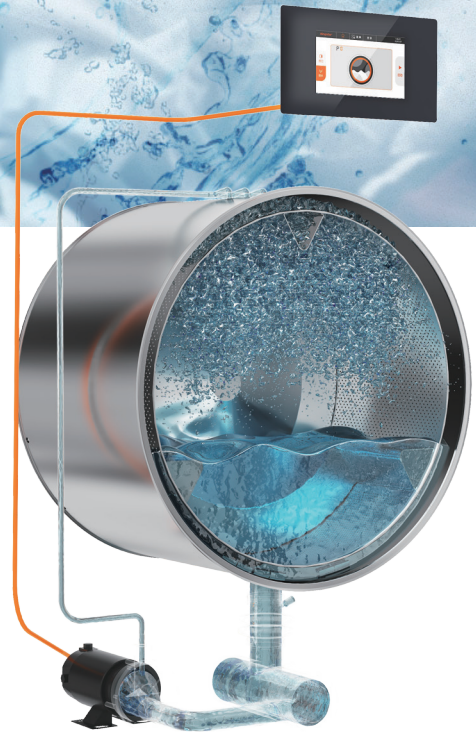


- 1 The Kingstar intelligent washing system was developed by professional software engineers and experienced laundry experts from Taiwan. It is designed to optimize drum speed and rotation/pause ratios for different fabric types, delivering exceptional cleaning performance while protecting garments from damage.
- 2 With a minimum drum speed of 10 rpm, the machine is ideal for delicate and high-end fabrics such as silk, wool, and cashmere.
- 3 It supports over 70 customizable wash programs, with user-defined settings transferable across devices. The system features a 12.1-inch full-color LCD touchscreen, intuitive controls, automatic detergent dosing, and one-touch operation for complete cycle execution.
- 4 Each wash program allows personalized settings based on fabric characteristics, including main wash speed, high-speed extraction speed, duration, and temperature—ensuring maximum garment safety.
- 5 The interface between the inner drum and outer cylinder features rolled edges with a 4–6 mm clearance—narrower than typical European or American designs—to prevent fabric snagging. The door features a convex glass design that keeps garments away from the loading port, minimizing the risk of damage caused by zippers or buttons snagging.
- 6 The inner drum, outer cylinder, and all water-contact surfaces are constructed from 304 stainless steel, providing excellent corrosion resistance and ensuring safe, consistent wash quality.



Advanced Inner Drum and Integrated Sprinkling System

Cleaner Washing



304

Stainless Steel
Inner Drum and Outer
Cylinder Material

3_{mm}

Inner Drum Mesh Hole

The inner drum is manufactured using mold technology and specialized Italian equipment, resulting in a seamless and robust structure built for long-term durability.

The inner drum features a diamond-patterned perforated surface with 3mm openings, designed to increase contact area for improved washing performance while minimizing fabric wear.

An integrated spray rinsing system is included to assist in lint removal and ensure cleaner, more hygienic washing results.



INTELLIGENT WEIGHING AND HIGH EXTRACTION FACTOR

Lower Washing Costs

An intelligent weighing system dynamically adjusts water, detergent, and steam usage according to the actual linen load, significantly reducing utility consumption while maintaining consistent washing performance.

The machine features a 400G extraction force, preventing water spotting on down jackets and significantly reducing drying time, thereby lowering overall energy consumption.

400G
G-force Design



OPTIMIZED DESIGN FOR HIGHER WASHING EFFICIENCY

Higher Washing Efficiency

The Kingstar wet cleaning washer series features 22 design optimizations over standard commercial washers, covering automation control, washing cycle structure, mechanical agitation, surface contact friction, detergent dosing, and drainage systems—delivering significantly enhanced efficiency and long-term operational value.

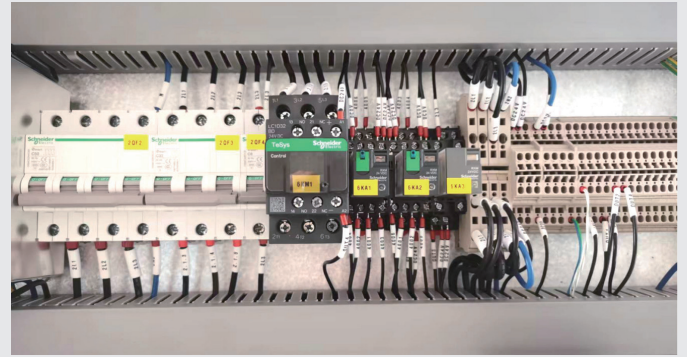
22
Optimized Design
Features





IMPORTED COMPONENTS FOR MORE STABLE QUALITY

Product Stability

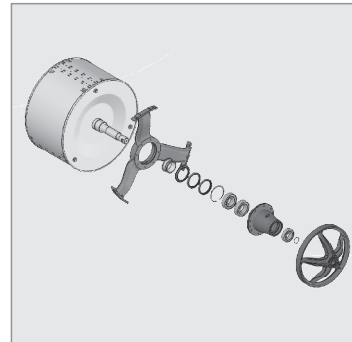


The main motor is custom-made by a listed company in China, with bearings from the US TWB, circuit breakers, contactors, and relays from French Schneider, and all wires, plugs, and fasteners being imported brands, ensuring overall machine quality and product stability.



LONG-LIFE DESIGN WITH A 3-YEAR WARRANTY

Better Durability



5 years
no need to replace
bearing seals

20 years
lifespan

2 years
warranty on the
whole machine

- 1 The frame structure uses a weld-free process, ensuring high structural strength and stability, avoiding large stress deformation due to welding.
- 2 The intelligent extraction design ensures low vibration, low noise, and good stability during high-speed extraction, with a long service life.
- 3 The main transmission uses a three-bearing design, with bearings and oil seals from imported brands, ensuring high strength and maintenance-free operation for 5 years without needing to replace the bearings or oil seals.
- 4 The entire machine is designed for a 20-year lifespan, with a 2-year warranty on the whole machine.



TECHNICAL PARAMETERS



Specification Model	SHS-2012P	SHS-2015P	SHS-2020P	SHS-2025P
Operating Voltage (V/P/Hz)	380/3/50	380/3/50	380/3/50	380/3/50
Washing Capacity (kg)	5~12	5~15	8~20	8~25
Drum Volume (L)	120	150	200	250
Washing/Spinning Speed (rpm)	15~980	15~980	15~980	15~980
Transmission Power (kW)	1.5	1.5	2.2	3
Electric Heating Power (kW)	12	12	18	18
Noise (db)	≤70	≤70	≤70	≤70
Extraction Factor (G)	400	400	400	400
Automatic Dosing Ports (ways)	9	9	9	9
Steam Pressure (MPa)	0.2~0.4	0.2~0.4	0.2~0.4	0.2~0.4
Inlet Water Pressure (MPa)	0.2~0.4	0.2~0.4	0.2~0.4	0.2~0.4
Steam Pipe Diameter (mm)	DN15	DN15	DN15	DN15
Inlet Pipe Diameter (mm)	DN20	DN20	DN20	DN20
Hot Water Pipe Diameter (mm)	DN20	DN20	DN20	DN20
Drain Pipe Diameter (mm)	Φ76	Φ76	Φ76	Φ76
Inner Drum Diameter × Depth (mm)	Φ650×372	Φ650×465	Φ750×457	Φ750×566
Overall Dimensions (mm)	890×885×1480	890×1077×1480	980×1050×1570	980×1160×1570
Weight(kg)	400	420	480	500



KINGSTAR DRYER SERIES

15kg

20kg

25kg



LAUNDRY SYSTEMS

TECHNICAL FEATURES

99

Built-in automatic programs

10 inches

HD touchscreen

3

Heating methods



- 1** Advanced Intelligent Drying System: Equipped with a 10-inch full-color HD touchscreen, it includes 99 built-in editable automatic programs, allowing selection based on different clothes and linens.
- 2** Loading Capacity Design: Designed with a 1:18 loading capacity ratio, the inner drum is made of 304 stainless steel material with a large door design, making it convenient for loading and unloading clothes.
- 3** High-Power Heating Design: Features a high-power heating system with an added insulation layer on the outer cylinder, ensuring quick temperature rise, good insulation effect, and improved drying efficiency.
- 4** Imported Electrical Components: All electrical components are imported brands, including Mitsubishi inverters, Schneider contactors, and all wires plugs, and bearings are also imported brands.
- 5** Multiple Heating Methods: Offers three heating methods: steam heating, electric heating, and gas heating.

TECHNICAL PARAMETERS



Specification Model	SDR-2015	SDR-2020	SDR-2025
Drum Diameter (mm)	750	850	850
Drum Depth (mm)	680	640	800
Volume (L)	300	400	453
Volume Load Ratio	1: 20	1: 20	18
Main Motor Power (kW)	0.37	0.55	0.75
Fan Motor Power (kW)	0.37	0.55	0.55
Rated Voltage (v)	380	380	380
Heater Power (kW)	13.5	18	22.5
Steam Pressure (MPa)	0.6	0.6	0.6
Width (mm)	850	900	890
Depth (mm)	1200	1200	1420
Height (mm)	1600	1700	1805
Weight (kg)	220	250	500



**Jiangsu Chuandao Intelligent
Equipment Co., Ltd.**

📍 No.388 Xinggang Road, Chongchuan District,
Nantong City, 226000, Jiangsu Province, China.

☎ +86-(0)513-85663388

☎ +86-(0)513-85663366

**Kunshan Chuandao Washing
Machinery Co.,Ltd.**

📍 No.18 Xiangyun Road, Dianshanhu Town,
Kunshan City, China

☎ +86-(0)512-83663888





☎ +86-(0)512-83663000

**Shanghai Chuandao Aimei
Machinery Equipment Co.,Ltd.**

📍 No.516 Tengfu Road, Baihe Town, Qingpu District,
Shanghai City, China

☎ +86-(0)21-39821778

☎ +86-(0)21-39821005

 www.kingstarwasher.com
 www.youtube.com/@kingstarwasher
 www.facebook.com/kingstarwasher
 www.linkedin.com/company/kingstarwasher